

2.5" SSD Desktop Installation Guide

Supplies Needed for Installation.

1. Your new Offtek 2.5" SSD Drive.
2. Screwdriver.
3. SSD Migration Kit. (if you wish to clean your existing drive)
4. 2.5" to 3.5" Bracket or EZ-Fit Dock
5. Clean and clear workspace.
6. Backup Flash Drive (if you wish to backup any important files before the installation)



Important!

Before installing your SSD drive, discharge any static electricity by grounding yourself to an unpainted metal object, such as the casing on your computer.

Remember

1. We recommend that you back up all important files before beginning the cloning process.
2. Ensure that you have allocated enough time to complete the process for the size of the drive you have.

120GB - 256GB = 20 - 30Mins
 256GB - 512GB = 30 - 60Mins
 512GB - 1TB = 60 - 90Mins
 1TB+ = 90+ Mins

3. Check your current Hard Drive Capacity as your new SSD drive must be larger than the 'USED' space on your current hard drive.

Windows 10 - Select 'File Explorer' from the start menu. Then Right click on the C: Drive from within the 'This PC' window and select Properties. You will then see an image like (fig 1.0) which will indicate the current used capacity of your hard drive. □

The used space of the hard drive must be no more than 85% of the capacity of your new Offtek SSD Drive.

Step 1 - Cloning you existing hard drive.

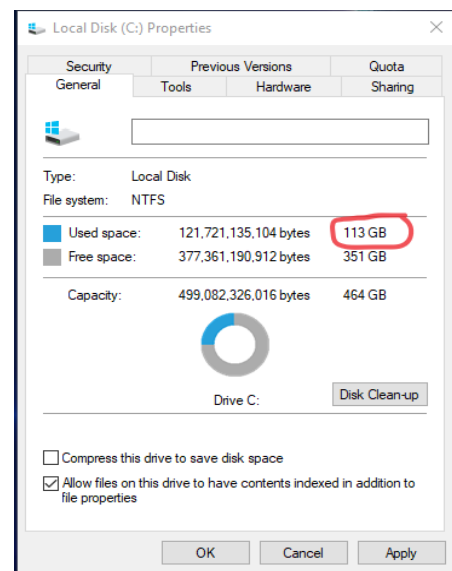
Whether you have purchased a migration kit from Offtek or you already have a kit the cloning process will be similar.

1. Insert the SSD drive into the External Drive enclosure and connect to the USB port on your Desktop. (You can alternatively install the SSD drive directly into your desktop as a secondary drive to clone using the step 2 instructions if you prefer).

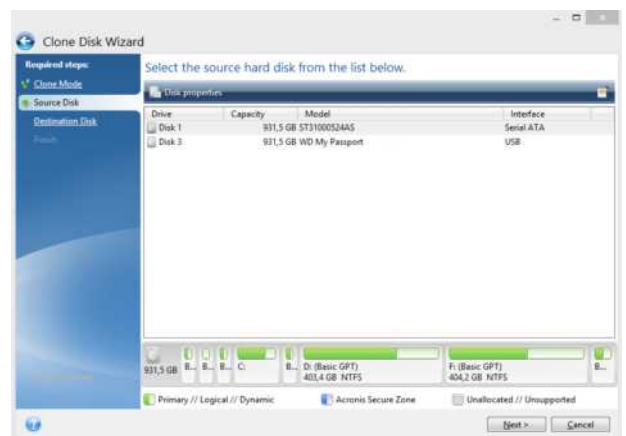
2. Download the software provided within the migration kit. With the offtek kits the software is Acronis. You will need to click 'Install' once the download has completed and then open the application.

3. You are now ready to clone your drive. Select the 'Clone Disk' option from the menu. Then select the mode (we recommend the automatic option).

4. Select the "Source" disk which will be your existing hard drive within your machine. Next select the "Destination" disk which will be your new Offtek SSD. Click proceed and your cloning will commence. (fig 1.1)



(fig 1.0)



(fig 1.1)

Step 2 - Installing your SSD into your Desktop

1. Once your SSD has completed cloning you can remove it from the external drive enclosure.
2. Shut down your computer and switch off the plug at the wall.
3. Open the case to reveal the current hard drive. Please consult your user manual as to the exact way to open the case on your specific machine.
4. **IMPORTANT** - Ground yourself by touching an unpainted metal surface. This will remove any static electricity you have built up before you touch any components within your machine.
5. Remove your existing hard drive. Be careful to ensure that all screws, brackets and cables are removed and set to one side to attach to your new SSD.
If you are installing a second hard drive then please see the "Adding an Additional Drive" section below.
6. If you have purchased an SSD bracket/EZ-Fit from ourselves please follow the instructions provided with the product to install the drive and bracket into your machine.
7. Re-attach the SATA and power cables to the new SSD drive and put your machine back together again.
8. Turn on the power and watch as your machine boots at the speed of light.



Adding an Additional Drive.

You will need to ensure that you have the following available.

- Unused SATA data Socket on your Motherboard
- Unused internal power cable
- Unused 2.5"/3.5" drive bay.

1. Insert your new drive into the second drivebay. If you have purchased an SSD bracket/EZ-Fit from ourselves please follow the instructions provided with the product to install the drive and bracket into your machine.
2. If you wish to boot from your new cloned SSD then you will need to ensure that the BIOS is amended to your required boot order.



Technical support & Customer Services

Email - support@offtek.co.uk

Call - 0845 259 0202

Website - www.offtek.co.uk/help-and-faqs